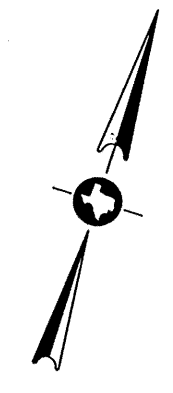


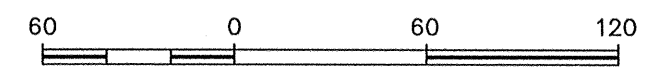
TRACT I: PARCEL A-1  
 BINCO INVESTMENTS, N.V.  
 TO  
 KENWOOD INVESTMENTS, L.P.  
 F.C. NO. 018-86-0188  
 JULY 15, 2003

TRACT I: PARCEL A-1  
 BINCO INVESTMENTS, N.V.  
 TO  
 KENWOOD INVESTMENTS, L.P.  
 F.C. NO. 018-86-0188  
 JULY 15, 2003



**TUSCAN LAKES SECTION SF 60-1**

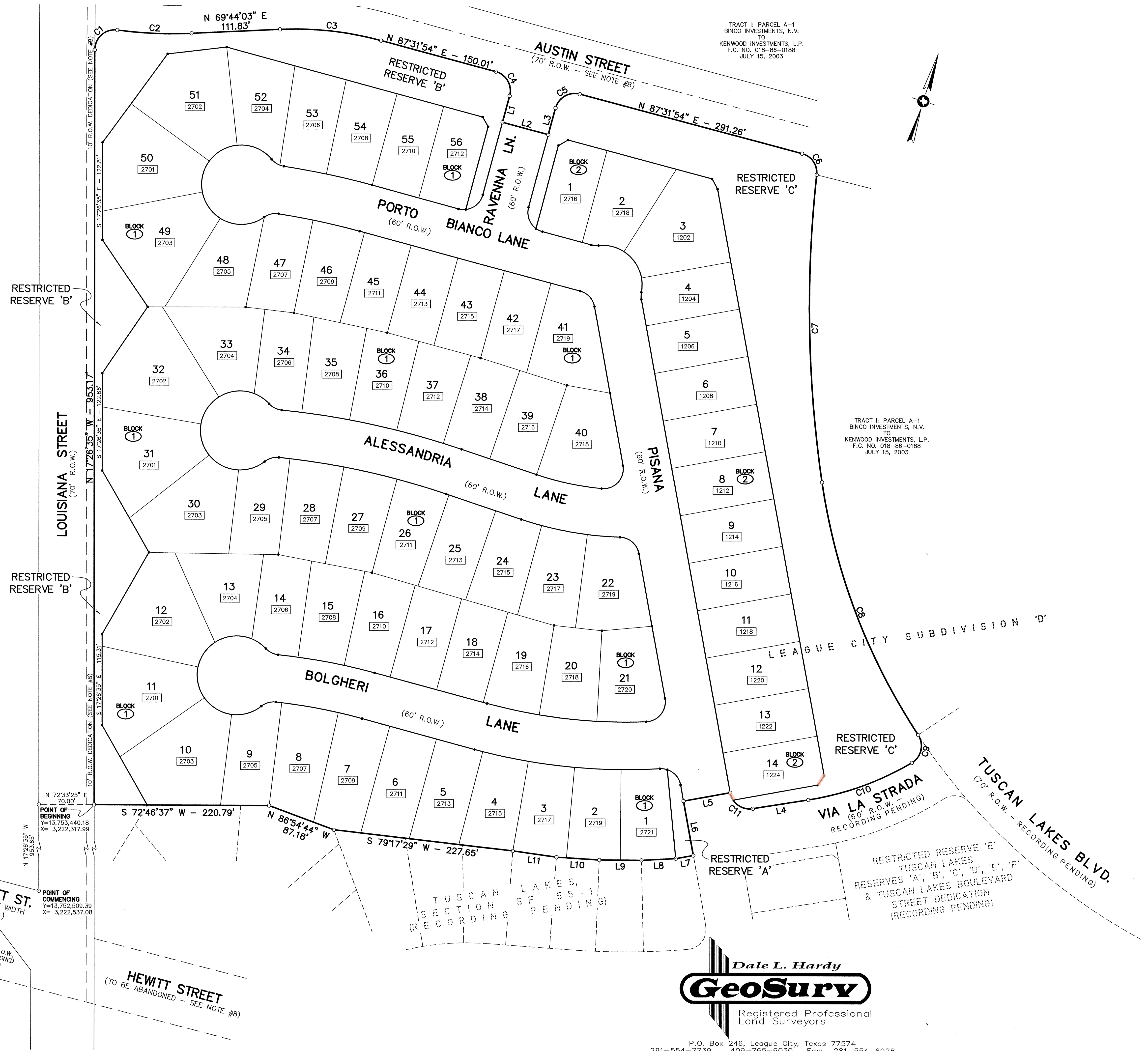
A SUBDIVISION OF  
 20.42 ACRES OF LAND  
 OUT OF AND A PART OF A  
 LOTS 52, 55, 56, 69, 72, & 73,  
 LEAGUE CITY SUBDIVISION 'D'  
 SITUATED IN THE  
 MICHAEL MULDOON TWO LEAGUE GRANT,  
 ABSTRACT NO. 18  
 FURTHER BEING OUT OF AND A PART OF  
 TRACT I: PARCEL 'A-1'  
 AS DESCRIBED IN SPECIAL WARRANTY DEED RECORDED AT  
 FILM CODE NO. 018-86-0188, O.P.R.R.P.G.C.TX.  
 CITY OF LEAGUE CITY  
 GALVESTON COUNTY, TEXAS  
 70 LOTS AND 3 RESERVES  
 IN 2 BLOCKS



SCALE: 1" = 60'

**Dale L. Hardy**  
**GeoSury**  
 Registered Professional  
 Land Surveyors

P.O. Box 246, League City, Texas 77574  
 281-554-7739 409-765-6030 Fax: 281-554-6928



HEWITT ST.  
 (VARIABLE WIDTH  
 R.O.W.)

HEWITT STREET  
 (TO BE ABANDONED - SEE NOTE #8)

TUSCAN LAKES,  
 SECTION SF 60-1  
 (RECORDING PENDING)

RESTRICTED RESERVE 'E'  
 TUSCAN LAKES  
 RESERVES 'A', 'B', 'C', 'D', 'E', 'F'  
 & TUSCAN LAKES BOULEVARD  
 STREET DEDICATION  
 (RECORDING PENDING)

POINT OF BEGINNING  
 Y=13,753,440.18  
 X= 3,222,317.99

POINT OF COMMENCING  
 Y=13,752,509.39  
 X= 3,222,537.08

60' PORTION  
 HEWITT ST. R.O.W.  
 TO BE ABANDONED  
 (SEE NOTE #8)

HEWITT STREET  
 (TO BE ABANDONED - SEE NOTE #8)

POINT OF BEGINNING  
 Y=13,753,440.18  
 X= 3,222,317.99

POINT OF COMMENCING  
 Y=13,752,509.39  
 X= 3,222,537.08

60' PORTION  
 HEWITT ST. R.O.W.  
 TO BE ABANDONED  
 (SEE NOTE #8)

HEWITT STREET  
 (TO BE ABANDONED - SEE NOTE #8)

POINT OF BEGINNING  
 Y=13,753,440.18  
 X= 3,222,317.99

POINT OF COMMENCING  
 Y=13,752,509.39  
 X= 3,222,537.08

60' PORTION  
 HEWITT ST. R.O.W.  
 TO BE ABANDONED  
 (SEE NOTE #8)

HEWITT STREET  
 (TO BE ABANDONED - SEE NOTE #8)

POINT OF BEGINNING  
 Y=13,753,440.18  
 X= 3,222,317.99

POINT OF COMMENCING  
 Y=13,752,509.39  
 X= 3,222,537.08

60' PORTION  
 HEWITT ST. R.O.W.  
 TO BE ABANDONED  
 (SEE NOTE #8)

HEWITT STREET  
 (TO BE ABANDONED - SEE NOTE #8)

POINT OF BEGINNING  
 Y=13,753,440.18  
 X= 3,222,317.99

POINT OF COMMENCING  
 Y=13,752,509.39  
 X= 3,222,537.08

60' PORTION  
 HEWITT ST. R.O.W.  
 TO BE ABANDONED  
 (SEE NOTE #8)

HEWITT STREET  
 (TO BE ABANDONED - SEE NOTE #8)

POINT OF BEGINNING  
 Y=13,753,440.18  
 X= 3,222,317.99

POINT OF COMMENCING  
 Y=13,752,509.39  
 X= 3,222,537.08

60' PORTION  
 HEWITT ST. R.O.W.  
 TO BE ABANDONED  
 (SEE NOTE #8)

HEWITT STREET  
 (TO BE ABANDONED - SEE NOTE #8)

POINT OF BEGINNING  
 Y=13,753,440.18  
 X= 3,222,317.99

POINT OF COMMENCING  
 Y=13,752,509.39  
 X= 3,222,537.08

60' PORTION  
 HEWITT ST. R.O.W.  
 TO BE ABANDONED  
 (SEE NOTE #8)

HEWITT STREET  
 (TO BE ABANDONED - SEE NOTE #8)

POINT OF BEGINNING  
 Y=13,753,440.18  
 X= 3,222,317.99

POINT OF COMMENCING  
 Y=13,752,509.39  
 X= 3,222,537.08

60' PORTION  
 HEWITT ST. R.O.W.  
 TO BE ABANDONED  
 (SEE NOTE #8)

HEWITT STREET  
 (TO BE ABANDONED - SEE NOTE #8)

POINT OF BEGINNING  
 Y=13,753,440.18  
 X= 3,222,317.99

POINT OF COMMENCING  
 Y=13,752,509.39  
 X= 3,222,537.08

60' PORTION  
 HEWITT ST. R.O.W.  
 TO BE ABANDONED  
 (SEE NOTE #8)

HEWITT STREET  
 (TO BE ABANDONED - SEE NOTE #8)

POINT OF BEGINNING  
 Y=13,753,440.18  
 X= 3,222,317.99

POINT OF COMMENCING  
 Y=13,752,509.39  
 X= 3,222,537.08

60' PORTION  
 HEWITT ST. R.O.W.  
 TO BE ABANDONED  
 (SEE NOTE #8)

HEWITT STREET  
 (TO BE ABANDONED - SEE NOTE #8)

POINT OF BEGINNING  
 Y=13,753,440.18  
 X= 3,222,317.99

POINT OF COMMENCING  
 Y=13,752,509.39  
 X= 3,222,537.08

60' PORTION  
 HEWITT ST. R.O.W.  
 TO BE ABANDONED  
 (SEE NOTE #8)

HEWITT STREET  
 (TO BE ABANDONED - SEE NOTE #8)

POINT OF BEGINNING  
 Y=13,753,440.18  
 X= 3,222,317.99

POINT OF COMMENCING  
 Y=13,752,509.39  
 X= 3,222,537.08

60' PORTION  
 HEWITT ST. R.O.W.  
 TO BE ABANDONED  
 (SEE NOTE #8)

HEWITT STREET  
 (TO BE ABANDONED - SEE NOTE #8)

POINT OF BEGINNING  
 Y=13,753,440.18  
 X= 3,222,317.99

POINT OF COMMENCING  
 Y=13,752,509.39  
 X= 3,222,537.08

60' PORTION  
 HEWITT ST. R.O.W.  
 TO BE ABANDONED  
 (SEE NOTE #8)

HEWITT STREET  
 (TO BE ABANDONED - SEE NOTE #8)

POINT OF BEGINNING  
 Y=13,753,440.18  
 X= 3,222,317.99

POINT OF COMMENCING  
 Y=13,752,509.39  
 X= 3,222,537.08

60' PORTION  
 HEWITT ST. R.O.W.  
 TO BE ABANDONED  
 (SEE NOTE #8)

HEWITT STREET  
 (TO BE ABANDONED - SEE NOTE #8)

POINT OF BEGINNING  
 Y=13,753,440.18  
 X= 3,222,317.99

POINT OF COMMENCING  
 Y=13,752,509.39  
 X= 3,222,537.08

60' PORTION  
 HEWITT ST. R.O.W.  
 TO BE ABANDONED  
 (SEE NOTE #8)

HEWITT STREET  
 (TO BE ABANDONED - SEE NOTE #8)

POINT OF BEGINNING  
 Y=13,753,440.18  
 X= 3,222,317.99

POINT OF COMMENCING  
 Y=13,752,509.39  
 X= 3,222,537.08

60' PORTION  
 HEWITT ST. R.O.W.  
 TO BE ABANDONED  
 (SEE NOTE #8)

HEWITT STREET  
 (TO BE ABANDONED - SEE NOTE #8)

POINT OF BEGINNING  
 Y=13,753,440.18  
 X= 3,222,317.99

POINT OF COMMENCING  
 Y=13,752,509.39  
 X= 3,222,537.08

60' PORTION  
 HEWITT ST. R.O.W.  
 TO BE ABANDONED  
 (SEE NOTE #8)

HEWITT STREET  
 (TO BE ABANDONED - SEE NOTE #8)

POINT OF BEGINNING  
 Y=13,753,440.18  
 X= 3,222,317.99

POINT OF COMMENCING  
 Y=13,752,509.39  
 X= 3,222,537.08

60' PORTION  
 HEWITT ST. R.O.W.  
 TO BE ABANDONED  
 (SEE NOTE #8)

HEWITT STREET  
 (TO BE ABANDONED - SEE NOTE #8)

POINT OF BEGINNING  
 Y=13,753,440.18  
 X= 3,222,317.99

POINT OF COMMENCING  
 Y=13,752,509.39  
 X= 3,222,537.08

60' PORTION  
 HEWITT ST. R.O.W.  
 TO BE ABANDONED  
 (SEE NOTE #8)

HEWITT STREET  
 (TO BE ABANDONED - SEE NOTE #8)

POINT OF BEGINNING  
 Y=13,753,440.18  
 X= 3,222,317.99

POINT OF COMMENCING  
 Y=13,752,509.39  
 X= 3,222,537.08

60' PORTION  
 HEWITT ST. R.O.W.  
 TO BE ABANDONED  
 (SEE NOTE #8)

HEWITT STREET  
 (TO BE ABANDONED - SEE NOTE #8)

POINT OF BEGINNING  
 Y=13,753,440.18  
 X= 3,222,317.99

POINT OF COMMENCING  
 Y=13,752,509.39  
 X= 3,222,537.08

60' PORTION  
 HEWITT ST. R.O.W.  
 TO BE ABANDONED  
 (SEE NOTE #8)

HEWITT STREET  
 (TO BE ABANDONED - SEE NOTE #8)

POINT OF BEGINNING  
 Y=13,753,440.18  
 X= 3,222,317.99

POINT OF COMMENCING  
 Y=13,752,509.39  
 X= 3,222,537.08

60' PORTION  
 HEWITT ST. R.O.W.  
 TO BE ABANDONED  
 (SEE NOTE #8)

HEWITT STREET  
 (TO BE ABANDONED - SEE NOTE #8)

POINT OF BEGINNING  
 Y=13,753,440.18  
 X= 3,222,317.99

POINT OF COMMENCING  
 Y=13,752,509.39  
 X= 3,222,537.08

60' PORTION  
 HEWITT ST. R.O.W.  
 TO BE ABANDONED  
 (SEE NOTE #8)

HEWITT STREET  
 (TO BE ABANDONED - SEE NOTE #8)

POINT OF BEGINNING  
 Y=13,753,440.18  
 X= 3,222,317.99

POINT OF COMMENCING  
 Y=13,752,509.39  
 X= 3,222,537.08

60' PORTION  
 HEWITT ST. R.O.W.  
 TO BE ABANDONED  
 (SEE NOTE #8)

HEWITT STREET  
 (TO BE ABANDONED - SEE NOTE #8)

POINT OF BEGINNING  
 Y=13,753,440.18  
 X= 3,222,317.99

POINT OF COMMENCING  
 Y=13,752,509.39  
 X= 3,222,537.08

60' PORTION  
 HEWITT ST. R.O.W.  
 TO BE ABANDONED  
 (SEE NOTE #8)

HEWITT STREET  
 (TO BE ABANDONED - SEE NOTE #8)

POINT OF BEGINNING  
 Y=13,753,440.18  
 X= 3,222,317.99

POINT OF COMMENCING  
 Y=13,752,509.39  
 X= 3,222,537.08

60' PORTION  
 HEWITT ST. R.O.W.  
 TO BE ABANDONED  
 (SEE NOTE #8)

HEWITT STREET  
 (TO BE ABANDONED - SEE NOTE #8)

POINT OF BEGINNING  
 Y=13,753,440.18  
 X= 3,222,317.99

POINT OF COMMENCING  
 Y=13,752,509.39  
 X= 3,222,537.08

60' PORTION  
 HEWITT ST. R.O.W.  
 TO BE ABANDONED  
 (SEE NOTE #8)

HEWITT STREET  
 (TO BE ABANDONED - SEE NOTE #8)

POINT OF BEGINNING  
 Y=13,753,440.18  
 X= 3,222,317.99

POINT OF COMMENCING  
 Y=13,752,509.39  
 X= 3,222,537.08

60' PORTION  
 HEWITT ST. R.O.W.  
 TO BE ABANDONED  
 (SEE NOTE #8)

HEWITT STREET  
 (TO BE ABANDONED - SEE NOTE #8)

POINT OF BEGINNING  
 Y=13,753,440.18  
 X= 3,222,317.99

POINT OF COMMENCING  
 Y=13,752,509.39  
 X= 3,222,537.08

60' PORTION  
 HEWITT ST. R.O.W.  
 TO BE ABANDONED  
 (SEE NOTE #8)

HEWITT STREET  
 (TO BE ABANDONED - SEE NOTE #8)

POINT OF BEGINNING  
 Y=13,753,440.18  
 X= 3,222,317.99

POINT OF COMMENCING  
 Y=13,752,509.39  
 X= 3,222,537.08

60' PORTION  
 HEWITT ST. R.O.W.  
 TO BE ABANDONED  
 (SEE NOTE #8)

HEWITT STREET  
 (TO BE ABANDONED - SEE NOTE #8)

POINT OF BEGINNING  
 Y=13,753,440.18  
 X= 3,222,317.99

POINT OF COMMENCING  
 Y=13,752,509.39  
 X= 3,222,537.08

60' PORTION  
 HEWITT ST. R.O.W.  
 TO BE ABANDONED  
 (SEE NOTE #8)

HEWITT STREET  
 (TO BE ABANDONED - SEE NOTE #8)

POINT OF BEGINNING  
 Y=13,753,440.18  
 X= 3,222,317.99

POINT OF COMMENCING  
 Y=13,752,509.39  
 X= 3,222,537.08

60' PORTION  
 HEWITT ST. R.O.W.  
 TO BE ABANDONED  
 (SEE NOTE #8)

HEWITT STREET  
 (TO BE ABANDONED - SEE NOTE #8)

POINT OF BEGINNING  
 Y=13,753,440.18  
 X= 3,222,317.99

POINT OF COMMENCING  
 Y=13,752,509.39  
 X= 3,222,537.08

60' PORTION  
 HEWITT ST. R.O.W.  
 TO BE ABANDONED  
 (SEE NOTE #8)

HEWITT STREET  
 (TO BE ABANDONED - SEE NOTE #8)

POINT OF BEGINNING  
 Y=13,753,440.18  
 X= 3,222,317.99

POINT OF COMMENCING  
 Y=13,752,509.39  
 X= 3,222,537.08

60' PORTION  
 HEWITT ST. R.O.W.  
 TO BE ABANDONED  
 (SEE NOTE #8)

HEWITT STREET  
 (TO BE ABANDONED - SEE NOTE #8)

POINT OF BEGINNING  
 Y=13,753,440.18  
 X= 3,222,317.99

POINT OF COMMENCING  
 Y=13,752,509.39  
 X= 3,222,537.08

60' PORTION  
 HEWITT ST. R.O.W.  
 TO BE ABANDONED  
 (SEE NOTE #8)

HEWITT STREET  
 (TO BE ABANDONED - SEE NOTE #8)

POINT OF BEGINNING  
 Y=13,753,440.18  
 X= 3,222,317.99

POINT OF COMMENCING  
 Y=13,752,509.39  
 X= 3,222,537.08

60' PORTION  
 HEWITT ST. R.O.W.  
 TO BE ABANDONED  
 (SEE NOTE #8)

HEWITT STREET  
 (TO BE ABANDONED - SEE NOTE #8)

POINT OF BEGINNING  
 Y=13,753,440.18  
 X= 3,222,317.99

POINT OF COMMENCING  
 Y=13,752,509.39  
 X= 3,222,537.08

60' PORTION  
 HEWITT ST. R.O.W.  
 TO BE ABANDONED  
 (SEE NOTE #8)

HEWITT STREET  
 (TO BE ABANDONED - SEE NOTE #8)

POINT OF BEGINNING  
 Y=13,753,440.18  
 X= 3,222,317.99

POINT OF COMMENCING  
 Y=13,752,509.39  
 X= 3,222,537.08

60' PORTION  
 HEWITT ST. R.O.W.  
 TO BE ABANDONED  
 (SEE