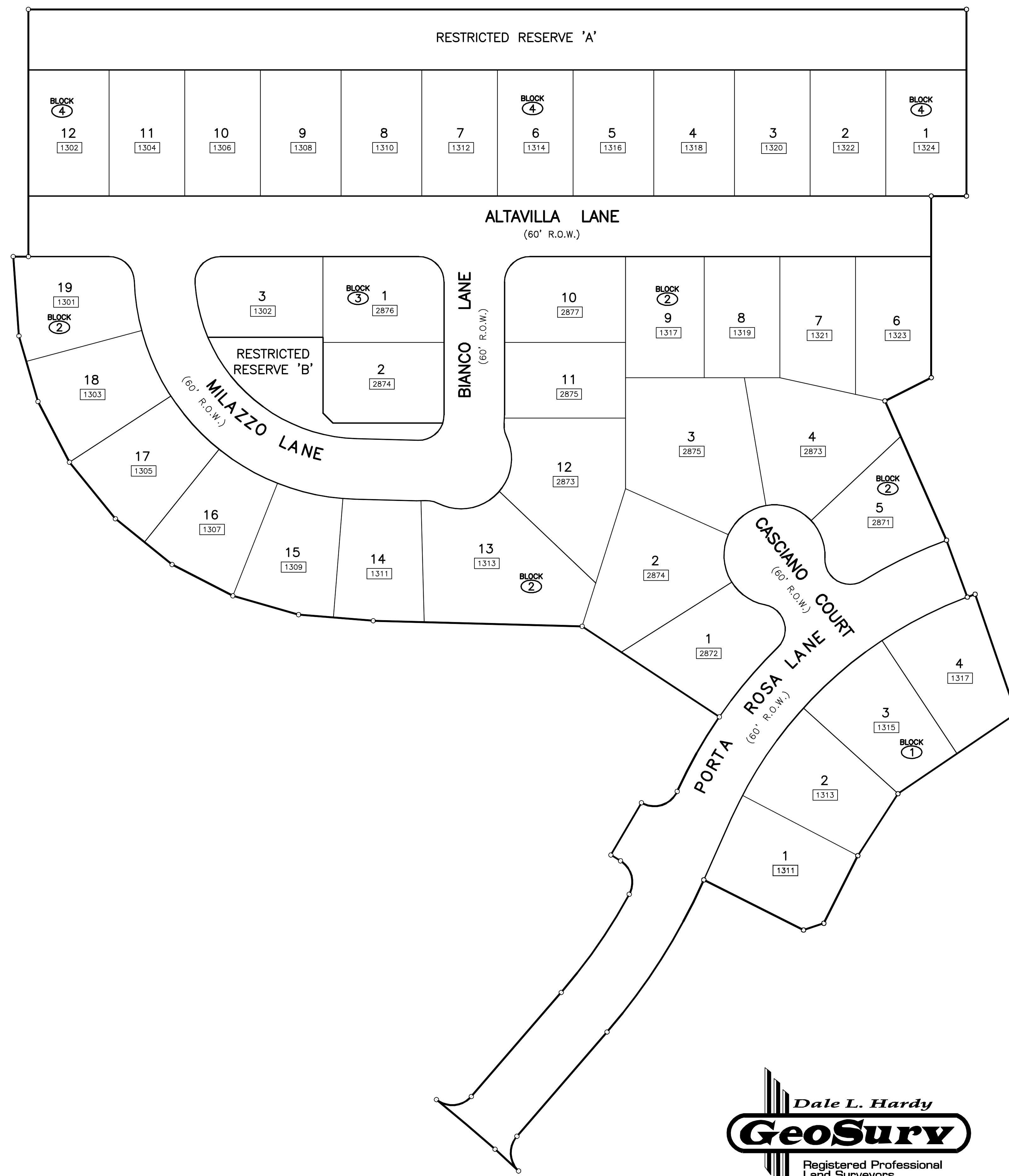
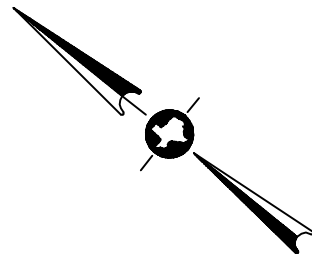




This map is a pictorial representation only and is subject to change. Additionally, no warranties or representations, expressed or implied, concerning the actual design, location or character of the existing or proposed facilities and improvements shown on this map are intended. This presentation graphic represents a compilation of information obtained from maps, surveys and other documents provided to Tuscan Lakes by others. 5/17/2007

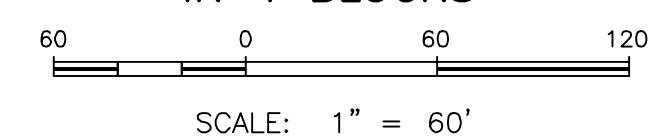


P.O. Box 248, League City, Texas 77574
 281-554-7739 409-765-6030 Fax: 281-554-8928



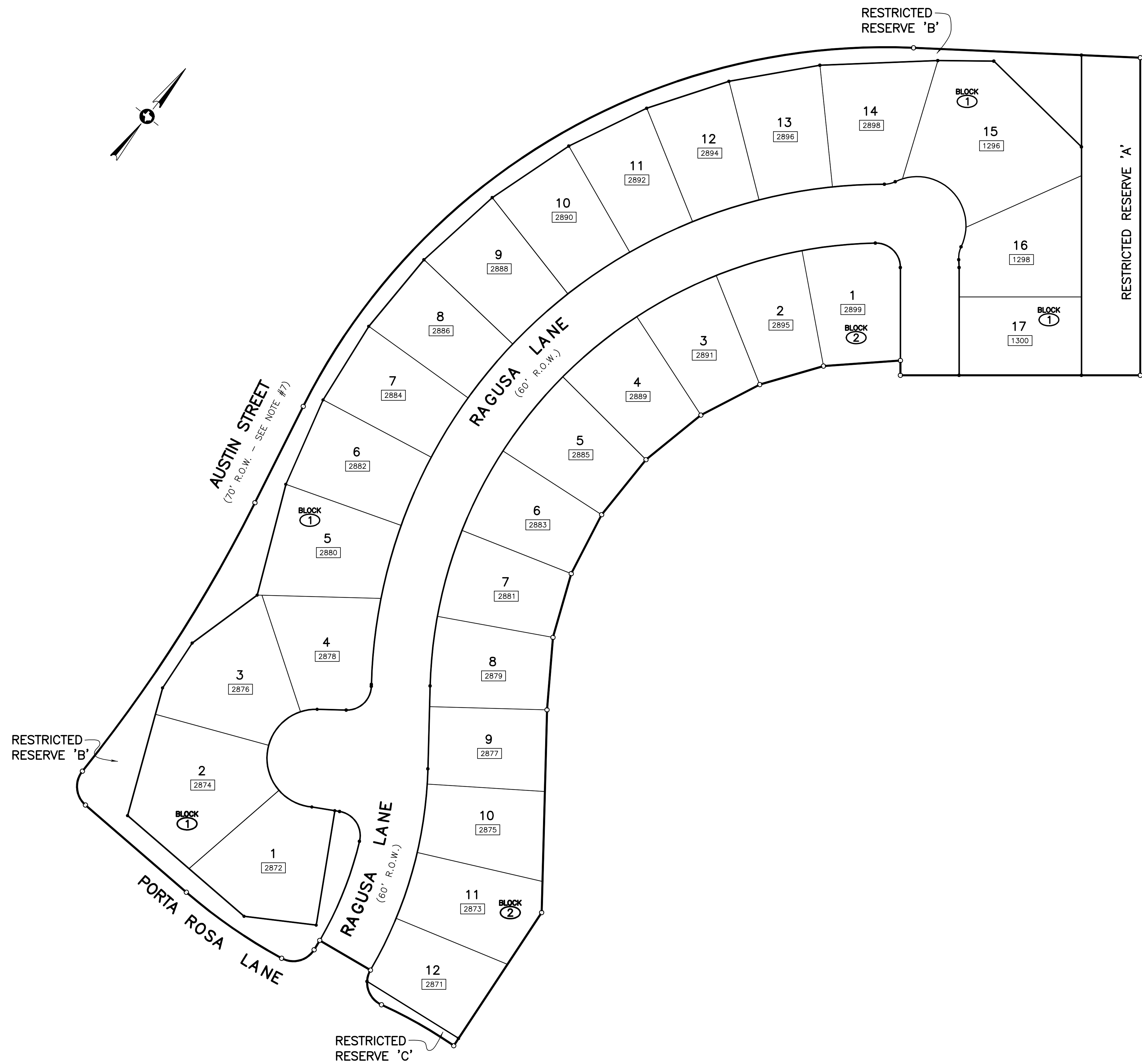
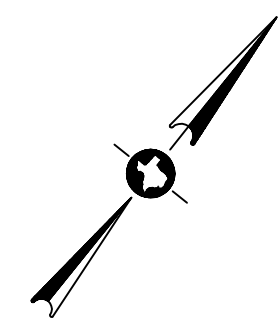
**TUSCAN LAKES
 SECTION SF 75-3**

A SUBDIVISION OF
 14.34 ACRES OF LAND
 OUT OF AND A PART OF A
 LOTS 75, 78, AND 79,
 LEAGUE CITY SUBDIVISION 'D'
 AND
 LOTS 66-67 AND 76-77,
 LEAGUE CITY SUBDIVISION 'F'
 SITUATED IN THE
 MICHAEL MULDOON TWO LEAGUE GRANT,
 ABSTRACT NO. 18
 FURTHER BEING OUT OF AND A PART OF
 TRACT II: PARCEL B
 AS DESCRIBED IN SPECIAL WARRANTY DEED RECORDED AT
 FILM CODE NO. 018-86-0188, O.P.R.R.P.G.C.TX.
 CITY OF LEAGUE CITY
 GALVESTON COUNTY, TEXAS
 38 LOTS AND 2 RESERVES
 IN 4 BLOCKS



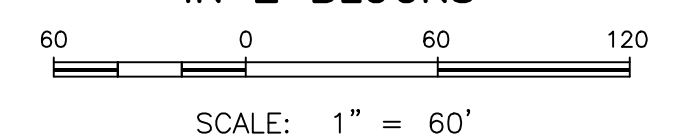
SHEET 2 OF 2
 SEPTEMBER 10, 2007
 TUSCAN LAKES SF 75-3

L:\MS\PROJECTS\JOHNSON DEVELOPMENT\08-0322\08-0322P\142.DWG DATE: SHEET 2



**TUSCAN LAKES
SECTION SF 75-4**

A SUBDIVISION OF
 10.68 ACRES OF LAND
 OUT OF AND A PART OF A
 LOTS 75, 78, AND 79,
 LEAGUE CITY SUBDIVISION 'D'
 SITUATED IN THE
 MICHAEL MULDOON TWO LEAGUE GRANT,
 ABSTRACT NO. 18
 FURTHER BEING OUT OF AND A PART OF
 TRACT II: PARCEL B
 AS DESCRIBED IN SPECIAL WARRANTY DEED RECORDED AT
 FILM CODE NO. 018-86-0188, O.P.R.R.P.G.C.TX.
 CITY OF LEAGUE CITY
 GALVESTON COUNTY, TEXAS
 29 LOTS AND 3 RESERVES
 IN 2 BLOCKS



SHEET 2 OF 2
 SEPTEMBER 10, 2007
 TUSCAN LAKES SF 75-4



P.O. Box 246, League City, Texas 77574
 281-554-7739 409-765-6030 Fax: 281-554-6928

L:\WORK\PROJECTS\JOHNSON_ENCLOSURE\07-0175-07-0175PLOT2.DWG
 LAYOUT SHEET 2