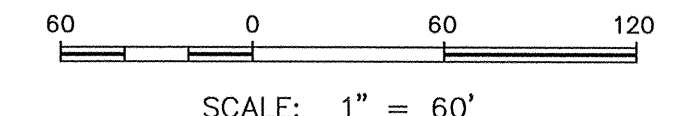


TYP. EASEMENT DETAIL
SCALE: 1"=30'



TUSCAN LAKES SECTION SF 90-1

A SUBDIVISION OF
 13.87 ACRES OF LAND
 OUT OF AND A PART OF A
 LOTS 69-74
 LEAGUE CITY SUBDIVISION 'D'
 SITUATED IN THE
 MICHAEL MULDOON TWO LEAGUE GRANT,
 ABSTRACT NO. 18
 FURTHER BEING OUT OF AND A PART OF
 TRACT I: PARCEL A-1 & TRACT II: PARCEL B
 AS DESCRIBED IN SPECIAL WARRANTY DEED RECORDED AT
 FILM CODE NO. 018-86-0188, O.P.R.R.P.G.C.TX.
 CITY OF LEAGUE CITY
 GALVESTON COUNTY, TEXAS
 27 LOTS AND 2 RESERVES
 IN 3 BLOCKS



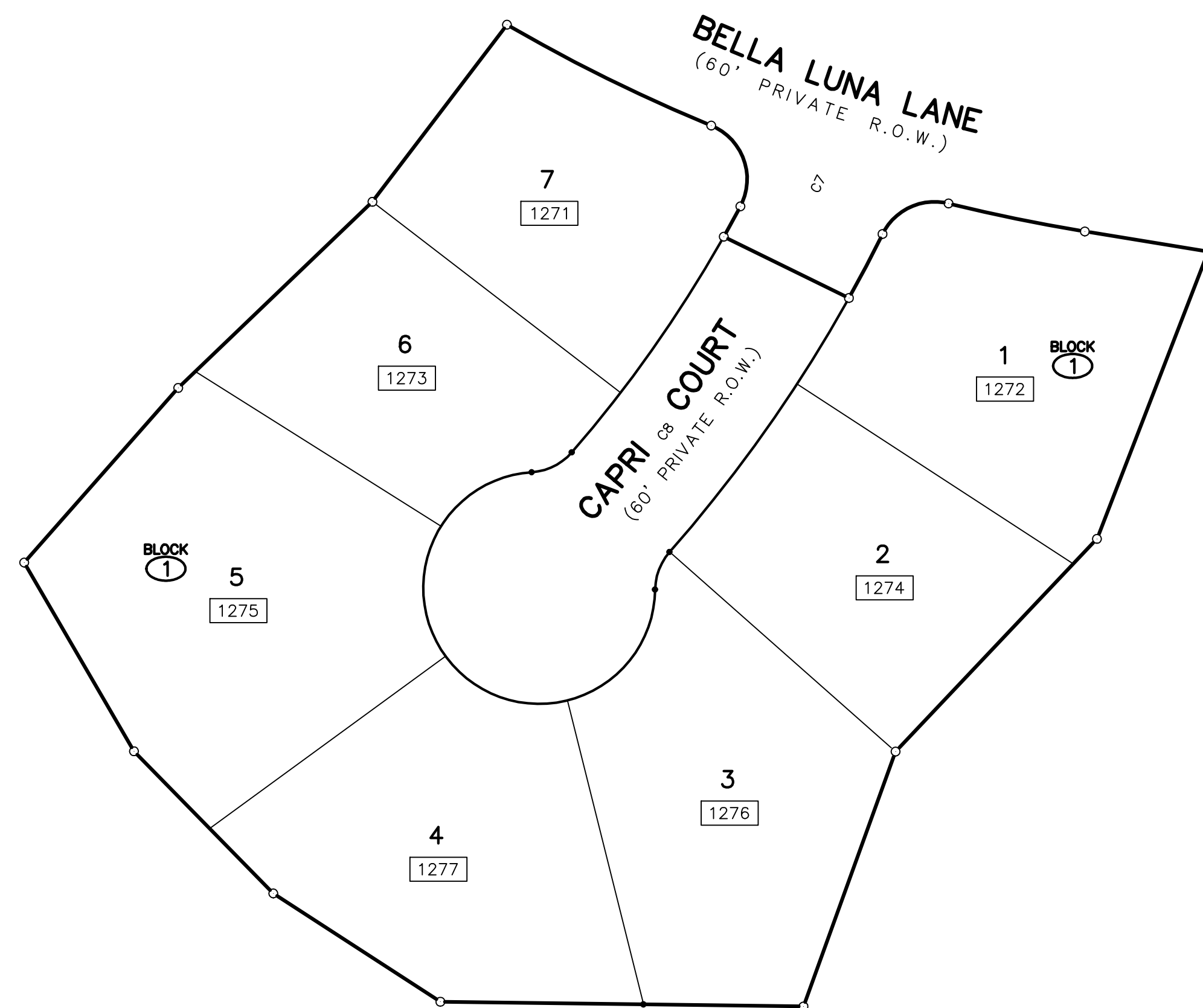
SCALE: 1" = 60'

SHEET 2 OF 2
 March 11, 2005
 TUSCAN LAKES SF 90-1



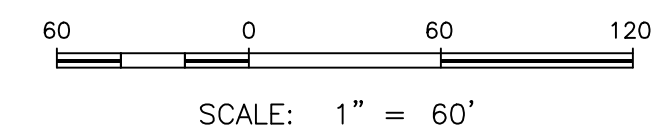
P.O. Box 246, League City, Texas 77574
 281-554-7739 409-765-6030 Fax: 281-554-6928

P:\WORK\PROJECTS\TUSCAN LAKES\RECORDING\04-0322\04-0322.PLT.DWG



TUSCAN LAKES
SECTION SF 90-2-1

A SUBDIVISION OF
2.93 ACRES OF LAND
 OUT OF AND A PART OF A
 LOTS 71, 72, AND 73
 LEAGUE CITY SUBDIVISION 'D'
 SITUATED IN THE
 MICHAEL MULDOON TWO LEAGUE GRANT,
 ABSTRACT NO. 18
 FURTHER BEING OUT OF AND A PART OF
 TRACT I: PARCEL A-1
 AS DESCRIBED IN SPECIAL WARRANTY DEED RECORDED AT
 FILM CODE NO. 018-86-0188, O.P.R.P.G.C.TX.
 CITY OF LEAGUE CITY
 GALVESTON COUNTY, TEXAS
7 LOTS IN 1 BLOCK



P.O. Box 246, League City, Texas 77574
 281-554-7739 409-765-6030 Fax: 281-554-6928

SEPTEMBER 25, 2007
 TUSCAN LAKES SF 90-2-1

L:\WORK\PROJECTS\TUSCAN LAKES\ENCL\ENCL1\CA-002\04-0783\PLT2.DWG
 LAYOUT: 3/24